

# Eubank Gate Security Improvement Project



*September 2019*





**CAUTION!**  
Construction and  
Congestion Ahead



# About the Project

Purpose

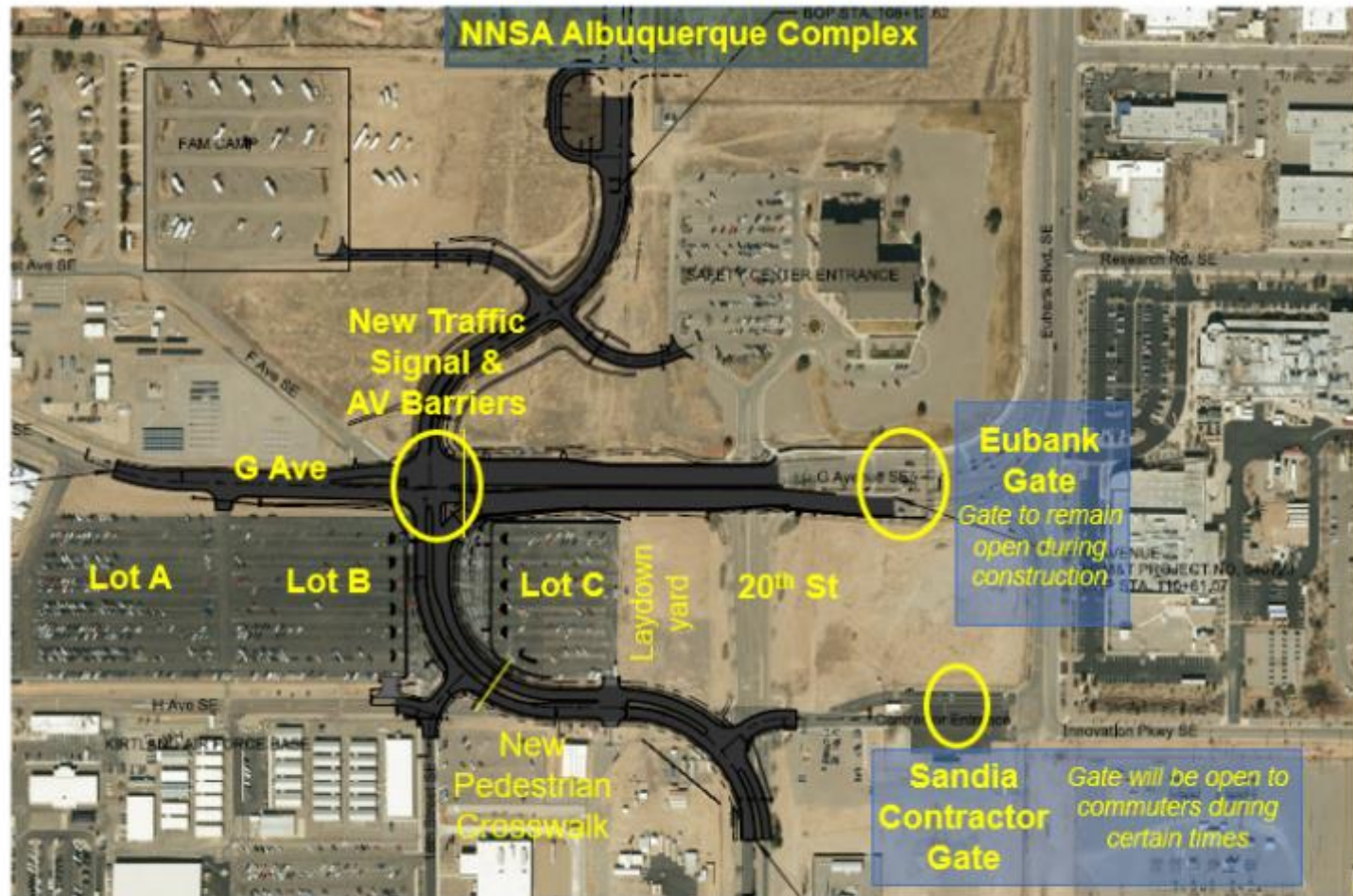
Construction Phases

Project Timeline



# Eubank Gate Security Improvement Project

(20th and G St. Realignment)



Construction site plan and new alignment

## Purpose:

- Increase threat containment distance (from 350' to 1,016')
- Provide access to NNSA Albuquerque Complex Project

## Roles:

- Sponsors: KAFB and NNSA
- Construction Manager: SNL
- Contractor: AUI, Inc.

# NNSA Albuquerque Complex Project

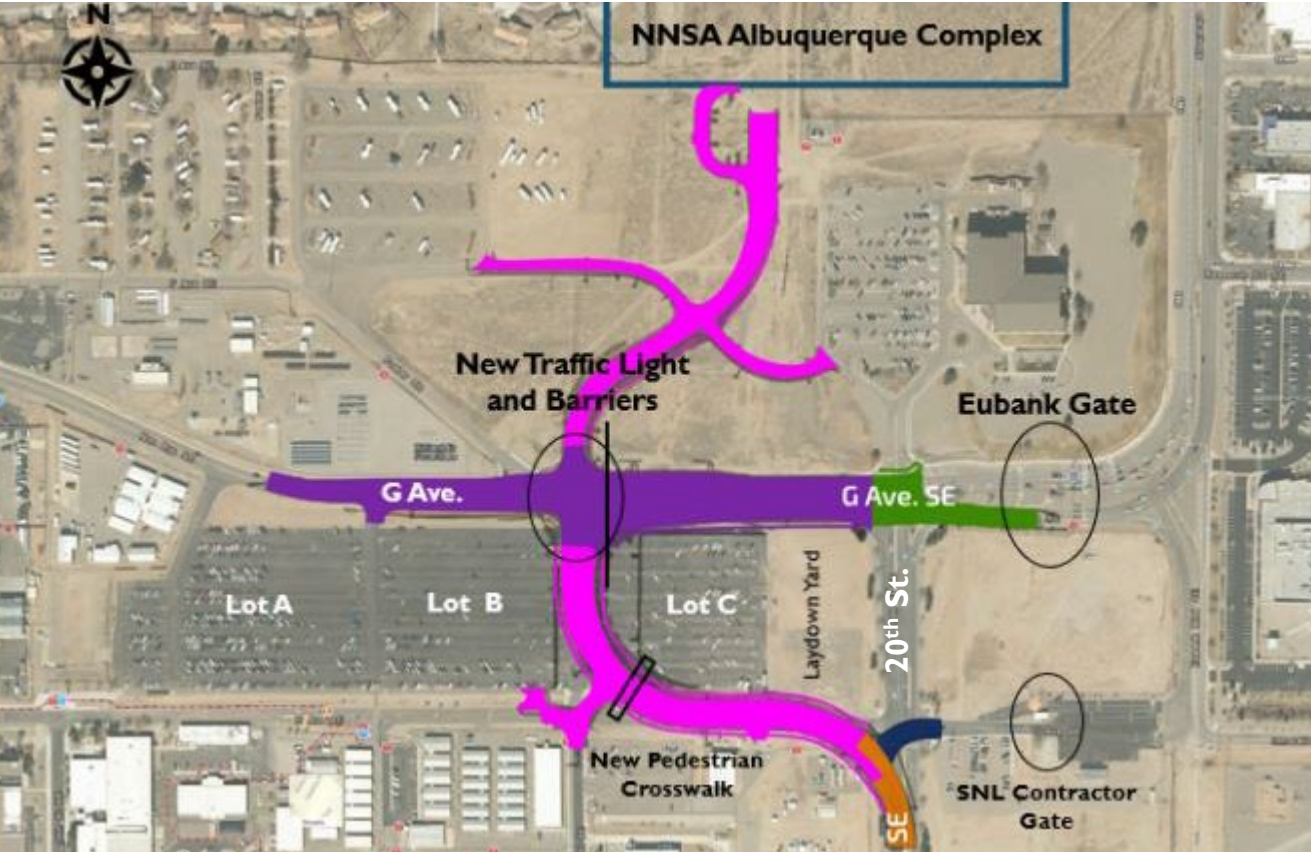


Rendering:  
NNSA project under construction at Eubank Blvd. and Gibson Blvd.

- A new ~333,000 sq. ft. building, LEED Gold-designed building.
- Replaces the existing complex of 23 buildings that have exceeded their useful life and no longer meet code.
- Will provide space for 1,200 DOE/NNSA employees.
- January 2021 – Anticipated construction completion.
- June-August 2021 – Transition of employees to new facility.



# ~12-Month Construction Project (October 2019 – September 2020)



## Managing Impacts in Phases

*Schedule still subject to change.*

- The contractor will be deployed Oct. 1.
- Work will also begin on improvements to the SNL Contractor Gate in October.
- The phased approach will help with traffic management.

Oct    Nov    Dec    Jan    Feb    March    April    May    June    July    Aug    Sept    Oct



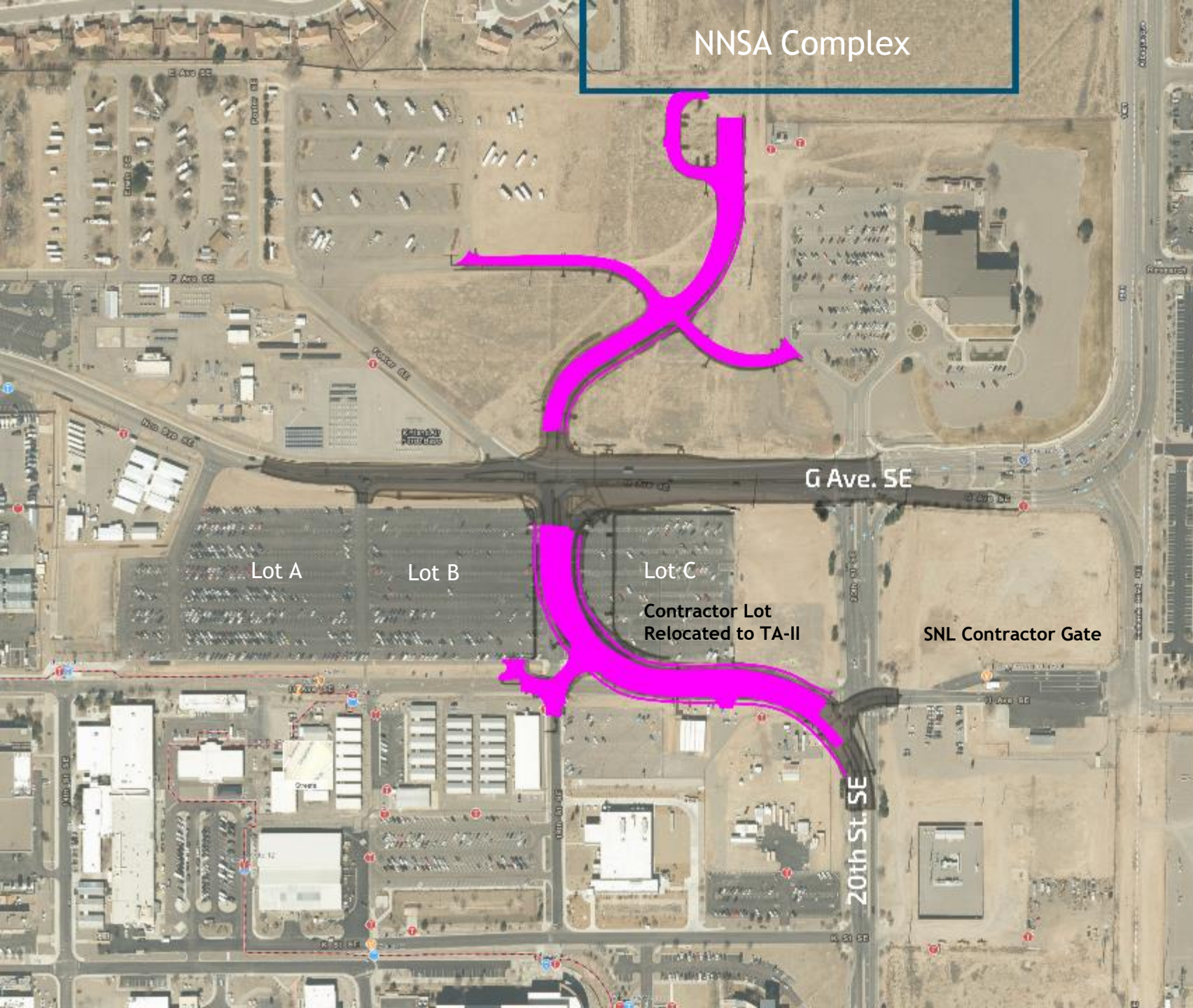
Phases 0+1

Phases 2+3

Phase 4    Phase 5    Phase 6



## NNSA Complex



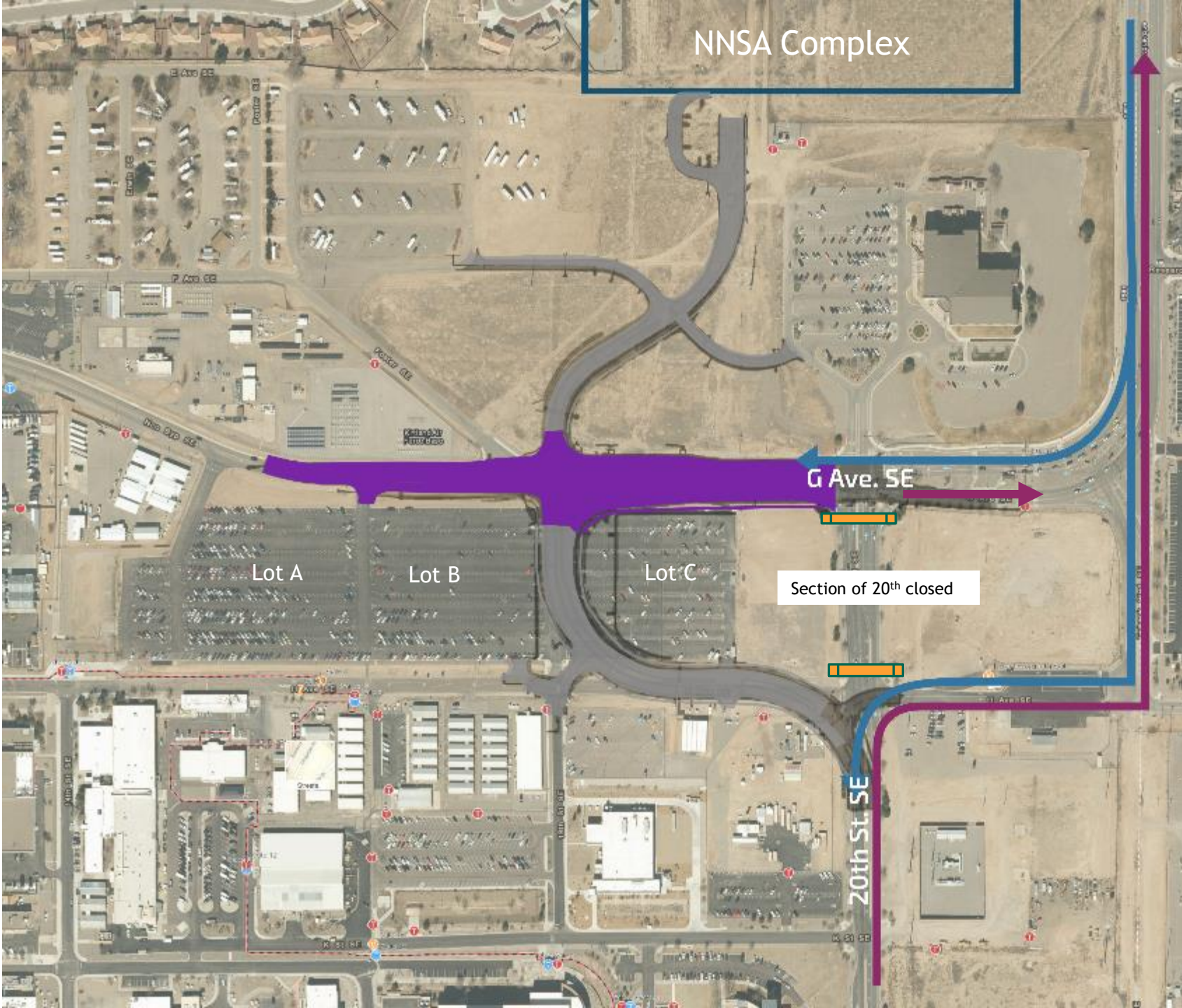
## Phase 0-I

Duration: ~4 months

- Work begins on new road to NNSA Complex
- No impact to Eubank Gate access. All lanes open.
- Parking spaces lost
  - Contractor lot moved to TA II
  - Improvements completed at Wyoming & H and 20<sup>th</sup> and Hardin
- Preparing temporary road south of G Ave.
- Access to LAZAP, Ion Beam and support parking will be made through 20<sup>th</sup> and K
- Improvements begin at SNL Contractor Gate



## NNSA Complex



### Phase 2+3

Duration: ~4 months

- Work on G Ave. begins. Traffic flow changes.
- No access to Eubank Blvd. from Innovation Parkway

#### INBOUND:

- G Ave access through Eubank Gate only. No left turns at 20<sup>th</sup> St.
- 20<sup>th</sup> St. access at SNL Contractor Gate only.
  - Contractor gate inbound (5am to 1pm, M-F)

#### OUTBOUND:

- 20 St. users exit through SNL Contractor gate.
  - Contractor gate outbound (1:30 to 5:30pm, M-F)

**PARKING:** Access to Parking lots A/B/C is accessible from G Ave.

Pedestrian gate open at certain hours.



# NNSA Complex



## Phase 4

Duration: ~1.5 months

- Work at 20th and H Ave. One lane open in each direction.

### **STILL FINALIZING TRAFFIC FLOW PLAN**

#### **INBOUND:**

- All lanes open at Eubank Gate

#### **OUTBOUND:**

- All lanes open at Eubank Gate
- Pedestrian gate remains open at certain hours





## NNSA Complex



## Phase 5

Duration: 1 month

- New regular traffic flow on 20<sup>th</sup> St. begins
  - Section of 20<sup>th</sup> St. permanently closed
- All lanes open at Eubank
- SNL Contractor gate closed
- Pedestrian gate closed

Section of 20<sup>th</sup>  
permanently  
closed

G Ave. SE

20th St. SE





## Phase 6

Duration: ~1 month

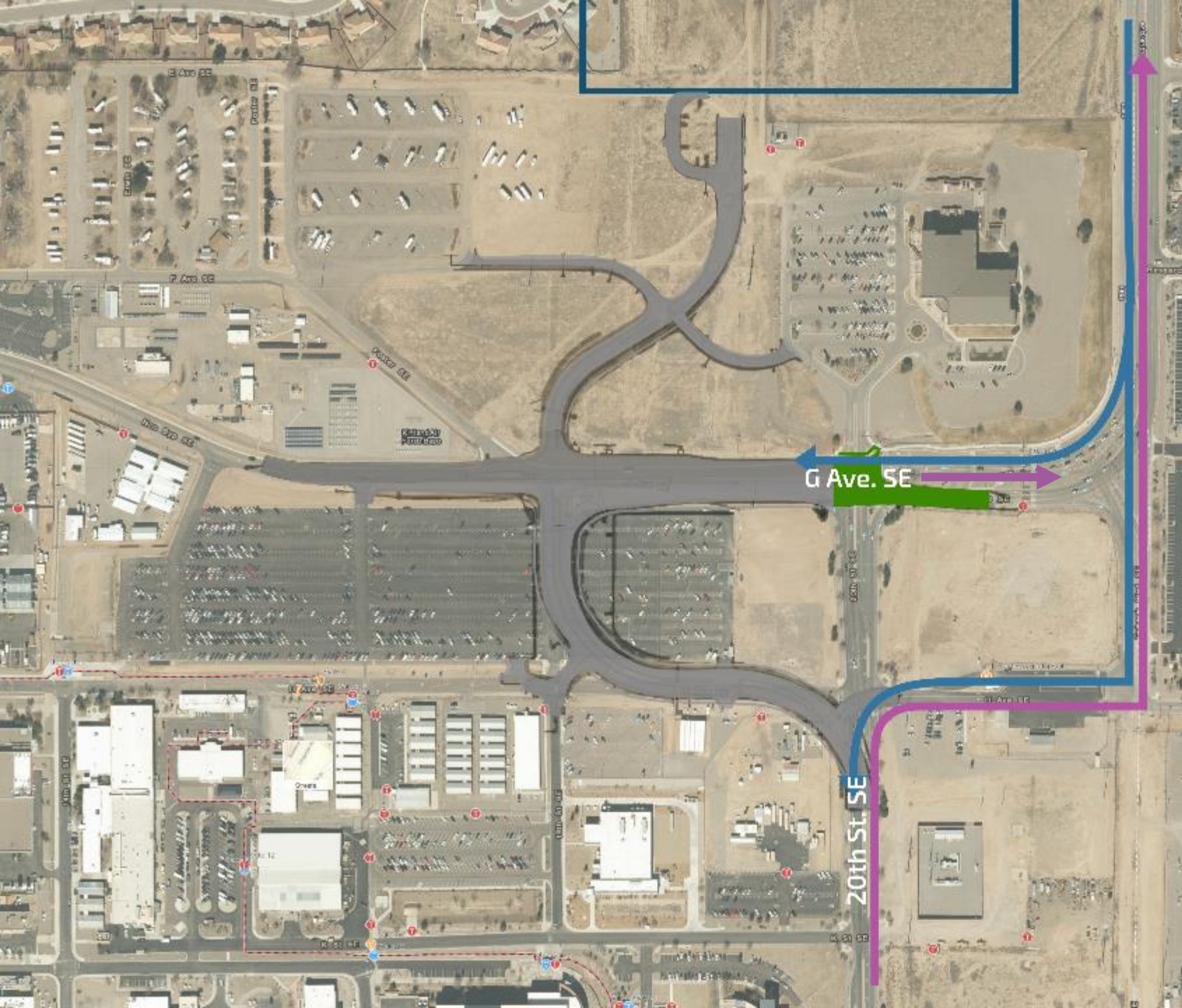
- Repaving G Ave., west of gate
- 24/7 road work begins
- Closures at Eubank Fri-Sun
- SNL contractor gate reopened

### INBOUND:

- G Ave. access through Eubank Gate only
- If using 20<sup>th</sup> St., access at SNL Contractor Gate
  - Contractor gate inbound (5am to 1pm, M-F)

### OUTBOUND:

- 20 St. users exit through SNL Contractor gate
  - Contractor gate outbound (1:30 to 5:30pm, M-F)
- Pedestrian gate open during certain times







Maintaining  
Safety  
Reducing  
Congestion

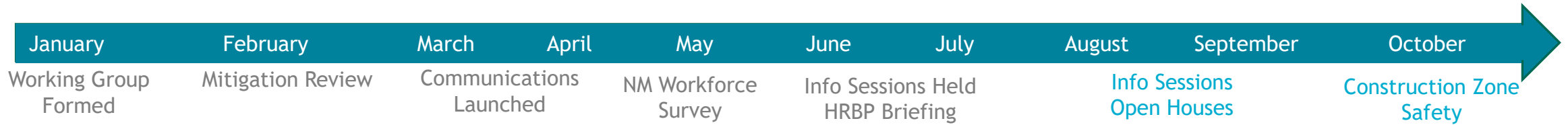


# Mitigating Impacts

- Gate Access
- Construction Controls
- Schedule Considerations
- Communications



# Working Group Actions



## Examined multitudes of mitigations

Gate access, hours,  
lane closures

SNL contractor access  
moved to KAFB gate

Food Service

## Surveyed Sandians about behavior changes

## Analyzed data sources to make recommendations

KAFB Gate  
Study

SNL Survey

HR Data

Turnstile Access

## Challenges:

- No silver bullet
- Access at Eubank will be constrained (inbound and outbound)
- Minimizing wait times at the gate
- Parking challenges
- Maintaining safe pedestrian and cyclist access

## Objectives:

- Effectively communicate as early and frequently as possible
- Provide commuter options and construction information to reduce congestion
- Complete construction project in a timeframe with the least impacts



# Types of Mitigation

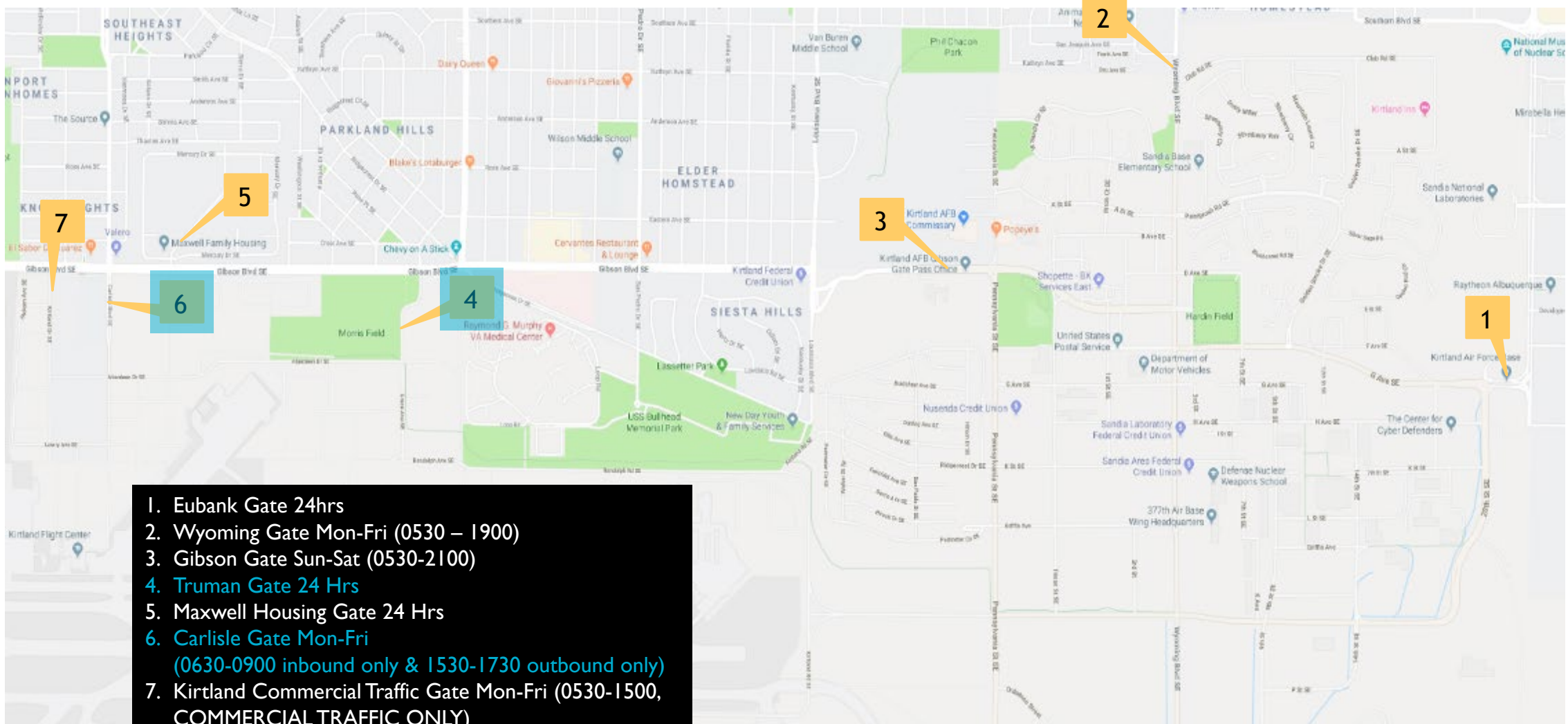




# Mitigations: Gate Access



To avoid base entry delays, KAFB Security Forces recommends use of Truman and Carlisle gates



Gates w/extra throughput capacity

Current as of: 11 Sep 19





### TRAFFIC MANAGEMENT:

Provide traffic control and signage to direct flow, identify issues, reduce confusion of drivers

### SECURITY:

Maintain 2 controllers per inbound lane

## MAINTAINING # of OPEN LANES



### INBOUND

(current = 4 inbound lanes)

- **Phase 0-1:** All Eubank lanes open (no contractor gate) = 4
- **Phases 2, 3:** 2 @ Eubank + 2 @ SNL Contractor Gate = 4
- **Phase 4:** 3 at Eubank + 1 @ SNL Contractor Gate = 4
- **Phase 5:** All Eubank lanes open (no contractor gate) = 4
- **Phase 6:** 2 @ Eubank + 2 @ SNL Contractor Gate = 4



### OUTBOUND

(current = 3 outbound lanes)

- **Phase 0-1:** All Eubank lanes open (no contractor gate) = 3
- **Phases 2, 3:** 1 @ Eubank + 2 @ SNL Contractor Gate = 3
- **Phase 4, 5:** All Eubank lanes open (no contractor gate) = 3
- **Phase 6:** 2 @ Eubank + 2 @ SNL Contractor Gate = 4

Still finalizing traffic flow plan for Phase 4.



# Mitigations: Schedule Adjustments



## BY THE NUMBERS

**Average vehicles per lane, per hour (KAFB)**

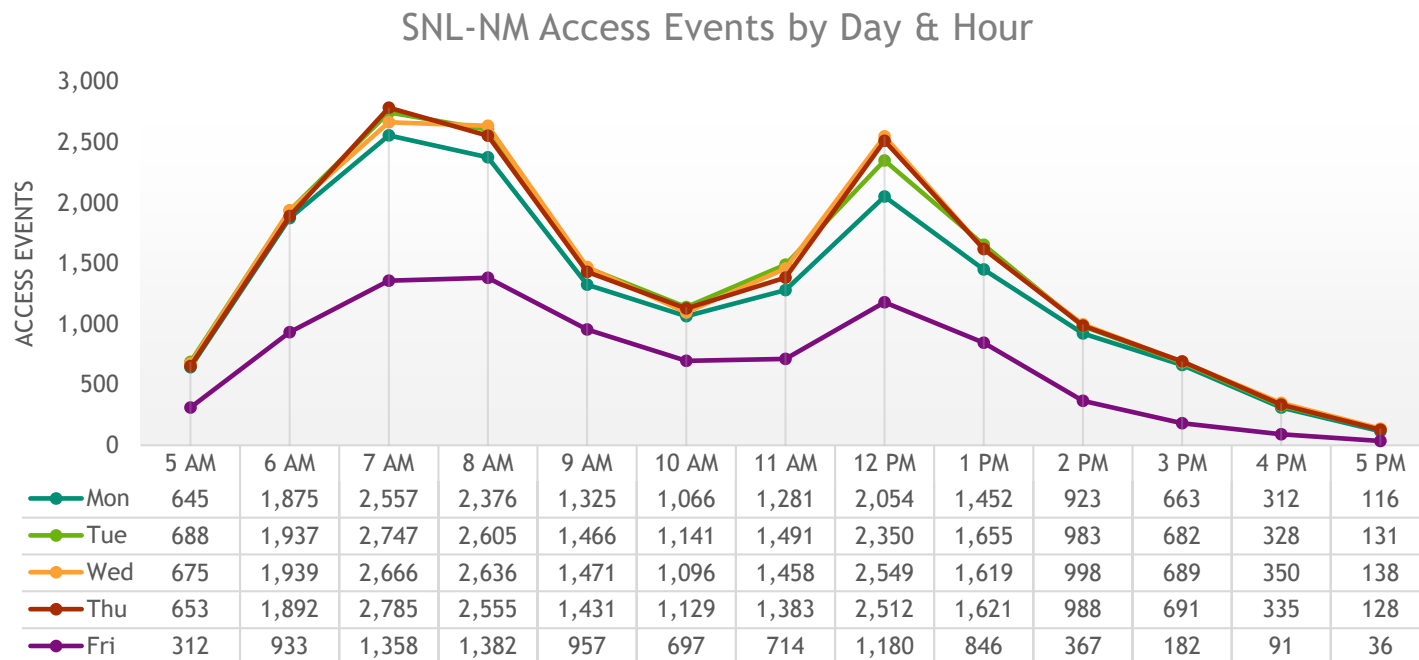
400-600 v/h, per lane thru Eubank (4 lanes inbound)

~ 7,300 vehicles between 6am-8am

## RUSH HOUR

**SNL Arrival Times (Turnstile Access)**

*How can we flatten the curve?*



**Recommendations for Sandia's workforce are forthcoming**

Possible staggered work schedule options to implement for Phase 2.



# Mitigations: Where to eat on Base



HR Home | Perks & Resources | Café Services & Nutrition | Contact Us

## Café Services & Nutrition

Through our food service vendors, Sandia offers a variety of onsite cafeterias, snack shops, vending machines, and healthy eating options.

- New Mexico Cafés
- California Café
- Snack shops
- Food trucks
- Healthy choices
- MoGro

<p><b>Thunderbird Café</b>, Bldg. 861 Breakfast: 6:00 am – 9:00 am Lunch: 10:30 am – 1:30 pm Grab and go delivery: 11:00 am – 1:00 pm Grab and go: 6:00 am – 3:00 pm <a href="#">This week's menu</a></p>	<p><b>DOE Café</b>, Bldg. 386 Breakfast: 6:00 am – 9:00 am Lunch: 10:30 am – 1:30 pm Grab and go delivery: 11:00 am – 1:00 pm Grab and go: 6:00 am – 1:30 pm <a href="#">This week's menu</a></p>
<p><b>Area IV Café</b>, Bldg. 960 Breakfast: 6:00 am – 9:00 am Lunch: 10:30 am – 1:30 pm Grab and go delivery: 11:00 am – 1:00 pm Grab and go: 6:00 am – 1:30 pm <a href="#">This week's menu</a></p>	<p><b>Awake Café</b>, Bldg. 898 – uncleared lobby Hours: 7:00 a.m. – 1:30 p.m.</p>

### Kirtland Lanes Bowling Center Sparetime Grill Snack Bar

**Bldg. 20228 • 846-6851**  
**Limited Breakfast • Lunch • Dinner**  
**Daily Lunch Specials**  
 Mon-Thu, 11 a.m. to 9 p.m.  
 Fri, 11 a.m. to Midnight  
 Sat, 10 a.m. to Midnight  
 Sun, Noon to 6 p.m.  
 Holidays, 11 a.m. to 5 p.m.  
**Pizza • Burgers • Appetizers •**  
**Breakfast Sandwiches**  
**Pancake Breakfast Saturdays**

### Jitters Coffee Shop

**Bldg. 20245 • 853-3223**  
**Breakfast • Snacks**  
 Mon-Fri, 7:30 a.m. to 1:30 p.m.  
 Sat-Sun & Holidays, Closed  
 AFGSC Family Days, Closed  
**Coffee • Breakfast Burritos • Muffins**  
**Deli Sandwiches • Specialty Drinks**

### Tijeras Arroyo Golf Course Bogey Bar & Grill Snack Bar

**846-1169**  
**Breakfast • Lunch • Special Events**  
**Daily Lunch Specials**  
 Mon-Sun 7 a.m. to 2 p.m.  
**Eggs • Omelettes • Burritos • Burgers**  
**Sandwiches • Soups • Salads**

### Mountain View Club

**Bldg. 22000 • 846-1746**  
**Dinner • Special Events • Catering**  
**Monthly Sunday Brunch**  
**Relativity Bar + Grille**  
 Wed-Thu 3-8 p.m.  
 Fri 3-10 p.m.  
 Mon, Tue, Sat & Sun Closed  
**Ground Zero**  
 Fri 3-10 p.m.  
**Appetizers • Sandwiches**  
**Nachos • Burgers**

### Thunderbird Military Dining Facility

**Bldg. 20350 • 846-8048**  
**Meal Card Airmen & Military on TDY**  
**Orders Only**  
**Weekdays**  
 Breakfast, 6-8 a.m.  
 Lunch, 11 a.m. to 1 p.m.  
 Dinner, 4-7 p.m.  
 Midnight, 10 p.m. to Midnight  
**Weekends/Holidays**  
 Brunch, 9 a.m. to 1 p.m.  
 Dinner, 5-7 p.m.  
 Midnight, 10 p.m. to Midnight

### BX FOOD COURT

#### Charley's • 265-5261

**Lunch**  
 Mon-Fri, 10:30 a.m. to 3 p.m.  
 Sat-Sun, 10:30 a.m. to 4 p.m.

#### Domino's • 289-2900

**Lunch • Dinner**  
 Mon-Sun, 10 a.m. to 11 p.m.  
 Delivery: Mon-Sun, 10 a.m. to  
 Midnight

#### Dunkin' Donuts • 265-5261

**Breakfast • Lunch • Coffee • Donuts**  
 Mon-Fri, 6 a.m. to 6 p.m.  
 Sat-Sun, 8 a.m. to 6 p.m.

#### Popeye's • 265-5261

**Breakfast • Lunch • Dinner**  
 Mon-Fri, 10:30 a.m. to 7 p.m.  
 Sat, 10:30 a.m. to 6 p.m.  
 Sun, 11 a.m. to 5 p.m.

#### Subway • 265-5261

**Breakfast • Lunch • Dinner**  
 Mon-Sat, 9 a.m. to 7 p.m.  
 Sun, 9 a.m. to 6 p.m.

#### McDonald's • 255-5363

**Breakfast • Lunch • Dinner**  
 Mon-Fri, 5 a.m. to 9 p.m.  
 Sat-Sun, 7 a.m. to 9 p.m.

#### Westside Subway • 265-1051

**Breakfast • Lunch • Dinner**  
 Mon-Fri, 6 a.m. to 7 p.m.  
 Sat-Sun, Closed





# 2019 Eubank Gate Security Improvement Project

CommuterAssistance.sandia.gov  
EubankGateProject.sandia.gov

Download the  
KAFB App!



- Try out a different route and gate
- Catch a carpool, vanpool or ride to work with a friend
- Determine what alternative commute works for you



## Consider, Plan, Act!

- Gate Access Options
- Alternative Work Schedules
- Carpool or Vanpool
- Ride the Bus
- Bike to Work

Latest project updates: [www.kirtland.af.mil/  
Eubank-Gate-Construction-Project/](http://www.kirtland.af.mil/Eubank-Gate-Construction-Project/)

**WE'LL BE BACK**  
Next Info Session  
January 2020!





**Questions?**

